



ROUND SLUGS

Diameter (mm)

* Consult our sales department for slug thickness options.

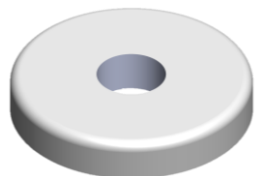
11,00	15,80	23,20	28,30	33,20	41,10	48,50	58,80	69,70	96,00
11,85	15,95	23,60	28,40	33,45	41,14	49,70	59,60	71,80	96,60
12,30	16,80	23,80	28,60	34,70	41,30	49,80	59,80	73,70	98,00
12,50	17,00	24,00	28,80	34,75	41,80	50,40	59,70	74,50	99,70
12,65	17,30	24,20	29,15	34,80	41,90	50,50	59,80	74,80	102,00
12,75	17,60	24,30	29,30	35,30	42,80	50,60	60,60	75,70	115,70
12,80	17,80	24,70	29,65	35,50	43,20	50,70	61,60	79,70	119,70
13,30	18,10	24,80	29,70	35,80	43,80	51,50	61,80	79,80	124,70
13,50	18,70	24,85	29,80	36,00	44,20	51,80	62,00	81,50	135,00
13,80	18,80	25,00	30,30	36,40	44,50	52,50	62,80	81,80	135,70
14,35	19,50	25,20	30,80	36,80	44,65	52,70	63,10	84,10	136,10
14,40	19,70	25,40	30,85	37,20	44,70	53,50	63,30	84,60	153,14
14,80	19,80	25,80	31,00	37,44	44,80	53,80	63,70	85,00	171,30
14,85	20,50	26,40	31,20	37,50	44,90	54,70	64,60	85,20	
15,10	20,80	26,80	31,30	37,70	45,00	55,00	64,70	87,75	
15,25	21,70	27,10	31,50	37,80	45,50	55,20	64,80	88,30	
15,30	21,80	27,20	31,55	37,90	46,00	55,80	65,70	88,70	
15,40	22,00	27,40	31,70	38,45	46,55	56,80	65,80	88,90	
15,45	22,10	27,70	31,80	39,70	46,70	57,70	66,30	89,70	
15,63	22,50	27,80	32,10	39,80	46,75	57,80	68,00	91,80	
15,70	22,70	28,05	32,95	40,80	47,60	58,60	69,60	94,80	

Standards

- EN 573-3
- EN 570
- BS ISO 22095:2020
- Directive 1994/62/EC
- Regulation EC No 1935/2004
- Directive 2011/65/EU of 8 June 2011 RoHS with all amendment
- Directive 2000/53/EU of 18 September 2000 ELV with all amendment
- Norm EN 602
- ISO 9001
- IATF 16949
- Pressure Equipment (Safety) Regulation 2016/1105, Schedule 2, Part. 4, Para. 31 (8) as well as EN 764-5, Para. 4.2



EN AW 1050, EN AW 1070, EN AW 1100, EN AW 3003, EN AW 3102, EN AW 3205,
EN AW 5052, EN AW 5054, EN AW 5754, EN AW 6060, EN AW 6063, EN AW 6082



ROUND SLUGS WITH HOLE

* Consult our sales department for slug thickness options.

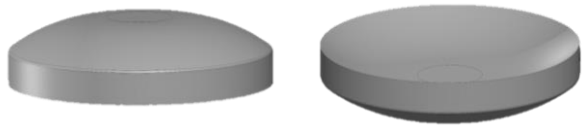
Diameter (mm)	Hole (mm)	Diameter (mm)	Hole (mm)	Diameter (mm)	Hole (mm)	Diameter (mm)	Hole (mm)	Diameter (mm)	Hole (mm)
12,50	5,30	27,80	8,00	34,70	8,00	44,65	12,00	56,80	11,00
13,30	5,00	27,80	9,00	34,70	9,00	44,65	15,00	57,70	14,00
14,40	8,40	27,80	10,50	34,75	12,00	44,80	14,00	58,50	12,30
15,70	6,00	27,80	12,00	34,80	10,00	44,90	11,00	58,80	9,00
15,70	8,00	28,40	10,00	34,80	11,00	45,00	10,40	59,80	8,05
17,80	8,00	28,60	5,70	36,80	16,50	46,40	25,70	62,00	16,50
18,70	6,00	28,80	7,20	37,70	12,00	46,70	24,50	63,30	10,20
18,70	8,00	29,70	8,00	37,80	9,80	47,60	12,20	64,70	18,00
21,70	8,00	29,70	9,50	37,90	12,00	48,50	18,50	73,70	13,00
21,70	9,00	29,70	12,00	39,70	9,00	49,80	19,00	74,50	10,20
22,00	8,00	29,80	6,50	39,70	12,00	50,40	33,60	75,70	20,00
23,80	6,80	29,80	10,00	39,80	10,00	50,60	15,37	81,50	13,50
24,70	8,00	29,80	11,00	39,80	16,00	50,70	8,00	87,75	34,00
24,70	9,00	30,80	9,00	41,14	8,00	51,80	11,20	89,60	36,00
24,70	9,50	30,85	16,30	41,30	10,00	51,80	30,60	91,80	54,00
24,80	7,00	31,50	9,00	41,30	12,00	51,80	34,60	96,00	13,00
24,80	9,00	31,50	9,50	41,30	13,00	52,50	11,00	102,00	48,00
24,85	11,00	31,70	12,00	43,20	21,00	52,70	10,00		
25,00	6,20	31,80	11,00	43,80	8,15	54,70	8,00		
25,20	9,00	31,80	12,00	43,80	9,30	55,00	12,50		
27,70	8,00	33,20	13,00	43,80	11,20	55,80	33,60		

Standards

- EN 573-3
- EN 570
- BS ISO 22095:2020
- Directive 1994/62/EC
- Regulation EC No 1935/2004
- Directive 2011/65/EU of 8 June 2011 RoHS with all amendment
- Directive 2000/53/EU of 18 September 2000 ELV with all amendment
- Norm EN 602
- ISO 9001
- IATF 16949
- Pressure Equipment (Safety) Regulation 2016/1105, Schedule 2, Part. 4, Para. 31 (8) as well as EN 764-5, Para. 4.2



EN AW 1050, EN AW 1070, EN AW 1100, EN AW 3003, EN AW 3102, EN AW 3205, EN AW 5052, EN AW 5054, EN AW 5754, EN AW 6060, EN AW 6063, EN AW 6082



DOMED SLUGS

Diameter (mm)

* Consult our sales department for slug thickness options.

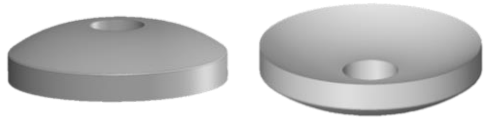
11,00	15,80	23,20	28,30	33,20	41,10	48,50	58,80	69,70	96,00
11,85	15,95	23,60	28,40	33,45	41,14	49,70	59,60	71,80	96,60
12,30	16,80	23,80	28,60	34,70	41,30	49,80	59,80	73,70	98,00
12,50	17,00	24,00	28,80	34,75	41,80	50,40	59,70	74,50	99,70
12,65	17,30	24,20	29,15	34,80	41,90	50,50	59,80	74,80	102,00
12,75	17,60	24,30	29,30	35,30	42,80	50,60	60,60	75,70	115,70
12,80	17,80	24,70	29,65	35,50	43,20	50,70	61,60	79,70	119,70
13,30	18,10	24,80	29,70	35,80	43,80	51,50	61,80	79,80	124,70
13,50	18,70	24,85	29,80	36,00	44,20	51,80	62,00	81,50	135,00
13,80	18,80	25,00	30,30	36,40	44,50	52,50	62,80	81,80	135,70
14,35	19,50	25,20	30,80	36,80	44,65	52,70	63,10	84,10	136,10
14,40	19,70	25,40	30,85	37,20	44,70	53,50	63,30	84,60	153,14
14,80	19,80	25,80	31,00	37,44	44,80	53,80	63,70	85,00	171,30
14,85	20,50	26,40	31,20	37,50	44,90	54,70	64,60	85,20	
15,10	20,80	26,80	31,30	37,70	45,00	55,00	64,70	87,75	
15,25	21,70	27,10	31,50	37,80	45,50	55,20	64,80	88,30	
15,30	21,80	27,20	31,55	37,90	46,00	55,80	65,70	88,70	
15,40	22,00	27,40	31,70	38,45	46,55	56,80	65,80	88,90	
15,45	22,10	27,70	31,80	39,70	46,70	57,70	66,30	89,70	
15,63	22,50	27,80	32,10	39,80	46,75	57,80	68,00	91,80	
15,70	22,70	28,05	32,95	40,80	47,60	58,60	69,60	94,80	

Standards

- EN 573-3
- EN 570
- BS ISO 22095:2020
- Directive 1994/62/EC
- Regulation EC No 1935/2004
- Directive 2011/65/EU of 8 June 2011 RoHS with all amendment
- Directive 2000/53/EU of 18 September 2000 ELV with all amendment
- Norm EN 602
- ISO 9001
- IATF 16949
- Pressure Equipment (Safety) Regulation 2016/1105, Schedule 2, Part. 4, Para. 31 (8) as well as EN 764-5, Para. 4.2

EN AW 1050, EN AW 1070, EN AW 1100, EN AW 3003, EN AW 3102, EN AW 3205,
EN AW 5052, EN AW 5054, EN AW 5754, EN AW 6060, EN AW 6063, EN AW 6082





DOMED SLUGS WITH HOLE

* Consult our sales department for slug thickness options.

Diameter (mm)	Hole (mm)	Diameter (mm)	Hole (mm)	Diameter (mm)	Hole (mm)	Diameter (mm)	Hole (mm)	Diameter (mm)	Hole (mm)
12,50	5,30	27,80	8,00	34,70	8,00	44,65	12,00	56,80	11,00
13,30	5,00	27,80	9,00	34,70	9,00	44,65	15,00	57,70	14,00
14,40	8,40	27,80	10,50	34,75	12,00	44,80	14,00	58,50	12,30
15,70	6,00	27,80	12,00	34,80	10,00	44,90	11,00	58,80	9,00
15,70	8,00	28,40	10,00	34,80	11,00	45,00	10,40	59,80	8,05
17,80	8,00	28,60	5,70	36,80	16,50	46,40	25,70	62,00	16,50
18,70	6,00	28,80	7,20	37,70	12,00	46,70	24,50	63,30	10,20
18,70	8,00	29,70	8,00	37,80	9,80	47,60	12,20	64,70	18,00
21,70	8,00	29,70	9,50	37,90	12,00	48,50	18,50	73,70	13,00
21,70	9,00	29,70	12,00	39,70	9,00	49,80	19,00	74,50	10,20
22,00	8,00	29,80	6,50	39,70	12,00	50,40	33,60	75,70	20,00
23,80	6,80	29,80	10,00	39,80	10,00	50,60	15,37	81,50	13,50
24,70	8,00	29,80	11,00	39,80	16,00	50,70	8,00	87,75	34,00
24,70	9,00	30,80	9,00	41,14	8,00	51,80	11,20	89,60	36,00
24,70	9,50	30,85	16,30	41,30	10,00	51,80	30,60	91,80	54,00
24,80	7,00	31,50	9,00	41,30	12,00	51,80	34,60	96,00	13,00
24,80	9,00	31,50	9,50	41,30	13,00	52,50	11,00	102,00	48,00
24,85	11,00	31,70	12,00	43,20	21,00	52,70	10,00		
25,00	6,20	31,80	11,00	43,80	8,15	54,70	8,00		
25,20	9,00	31,80	12,00	43,80	9,30	55,00	12,50		
27,70	8,00	33,20	13,00	43,80	11,20	55,80	33,60		

Standards

- EN 573-3
- EN 570
- BS ISO 22095:2020
- Directive 1994/62/EC
- Regulation EC No 1935/2004
- Directive 2011/65/EU of 8 June 2011 RoHS with all amendment
- Directive 2000/53/EU of 18 September 2000 ELV with all amendment
- Norm EN 602
- ISO 9001
- IATF 16949
- Pressure Equipment (Safety) Regulation 2016/1105, Schedule 2, Part. 4, Para. 31 (8) as well as EN 764-5, Para. 4.2



EN AW 1050, EN AW 1070, EN AW 1100, EN AW 3003, EN AW 3102, EN AW 3205, EN AW 5052, EN AW 5054, EN AW 5754, EN AW 6060, EN AW 6063, EN AW 6082



RECTANGULAR SLUGS

* Consult our sales department for slug thickness options.

Length (mm)	Width (mm)
19,20	19,20
19,80	19,80
21,80	21,80
22,30	22,30
22,70	22,70
22,80	22,80
24,70	24,70
26,50	23,50
29,10	24,20
62,00	48,00
77,50	77,50
82,50	68,00
113,40	86,90
121,60	91,60

Standards

- EN 573-3
- EN 570
- BS ISO 22095:2020
- Directive 1994/62/EC
- Regulation EC No 1935/2004
- Directive 2011/65/EU of 8 June 2011 RoHS with all amendment
- Directive 2000/53/EU of 18 September 2000 ELV with all amendment
- Norm EN 602
- ISO 9001
- IATF 16949
- Pressure Equipment (Safety) Regulation 2016/1105, Schedule 2, Part. 4, Para. 31 (8) as well as EN 764-5, Para. 4.2

EN AW 1050, EN AW 1070, EN AW 1100, EN AW 3003, EN AW 3102, EN AW 3205,
EN AW 5052, EN AW 5054, EN AW 5754, EN AW 6060, EN AW 6063, EN AW 6082





OVAL SLUGS

* Consult our sales department for slug thickness options.

Major axis (mm)	Minor axis (mm)
29,00	20,40
32,30	23,70
47,60	20,60
52,15	31,15
74,50	35,80

Standards

- EN 573-3
- EN 570
- BS ISO 22095:2020
- Directive 1994/62/EC
- Regulation EC No 1935/2004
- Directive 2011/65/EU of 8 June 2011 RoHS with all amendment
- Directive 2000/53/EU of 18 September 2000 ELV with all amendment
- Norm EN 602
- ISO 9001
- IATF 16949
- Pressure Equipment (Safety) Regulation 2016/1105, Schedule 2, Part. 4, Para. 31 (8) as well as EN 764-5, Para. 4.2

EN AW 1050, EN AW 1070, EN AW 1100, EN AW 3003, EN AW 3102, EN AW 3205,
EN AW 5052, EN AW 5054, EN AW 5754, EN AW 6060, EN AW 6063, EN AW 6082

